

ELITE
DESIGN & PERFORMANCE



2018
EN

It is impossible for me to present Elite using the single,
as it so much our habit to work as a group intertwining our opinions,
discoveries, inventions and proposals.
In order to become as close as possible to our cultural and historical roots
we installed ourselves in an ancient production site.
We have refurbished and restored it with love and care.
We work with enthusiasm in continuous liaison
with the world market of sport and free time.
As a sportive group, we train, select our seasonal objectives, decide the strategy,
and launch our champions in order to achieve the most prestigious goals.
Amerigo Sartore



HOME TRAINERS

MY E-TRAINING	6
MY REALVIDEO	9
ELITE GRUPPO	10
DRIVO	12
DIRETO	13
RAMPA	14
QUBO DIGITAL SMART B+	15
KURA	17
TURNO	18
QUBO POWER SMART B+	19
QUBO FLUID	21
NOVO FORCE	22
ARION DIGITAL SMART B+	24
QUICK-MOTION	26
ARION MAG	27
ARION AL13 / ARION	28

ACCESSORIES

VAISA / VAISETA / MISURO B+	29
SENSOR AND ADAPTOR / FREEHUB	29
COPERTON - SU-STA	30
TRAVEL BLOCK - GEL BLOCK	30
PROTECT PLUS - TRAINING MAT	31
ADAPTOR THRU-AXLE FOR TRAINERS - POSA'	31

BOTTLE CAGES

VICO CARBON	33
CUSTOM RACE PLUS	34
ROCKO CARBON	35
CANNIBAL XC	35
LEGGERO CARBON	36
CUSTOM RACE	36
PARON RACE	37
KIT CRONO CX	37
PRIA PAVÈ	38
MORÈO INOX	38
CIUSSI INOX	38
CIUSSI	38
CIUSSI GEL	38
VIP	38

TRIATHLON GEAR

BUTÀ	40
TRI BOX	40
SKEKANE	41
TIRACHE	41
RACKER	41
BIKE NUMBER HOLDER	41

BOTTLES

VINTAGE BOTTLES	42
BOTTLECAGES EROICA	43
BOTTLE EROICA	43
TEAMS	45
FLY	46
CRYSTAL OMBRA	47
OMBRA	48
CORSA	49
CORSA MTB	49
NOMO	50
CANDEA	50
SHAKER	50
TAKUIN	51
BYASI	51
NANOGEELITE	52
ICEBERG	53
TURACIO	54
DEBOYO	54
SYSSA	54
VERO GT	55
VERO GT THERMAL	55
TRINKA	56
BOCIA	57
KIT CEO	57
CORSETTA	57
TRINKA COCA-COLA	58
OMBRA COCA-COLA	59
SLAT WALL DISPLAY	60
FLOOR TOWER DISPLAY	61

MAINTENANCE

WORKSTAND RACE PRO	63
TIENSU'	64
TRS	65
BRACCIO PINZA	65
WORKSTAND TEAM	65
WORKSTAND TRAY	65

TRANSPORT

RONDA SPORT	67
RONDA	68
SANREMO RACE LOCK	68
SANREMO	69
ADAPTOR THRU-AXLE	69
VAISON	70
BORSON	71

STORAGE

ARCA	73
TAKÀ	73

OZONE ELITE

ELITE OZONE PRODUCTS	74
----------------------	----

OFFICIAL SUPPLIER OF:



WORLD TEAMS

AG2R LA MONDIALE
BAHRAIN - MERIDA
BMC RACING TEAM
FDJ
LOTTO SOUDAL
MOVISTAR TEAM
ORICA - SCOTT
TEAM SKY
TEAM SUNWEB
UAE TEAM EMIRATES

PROFESSIONAL CONTINENTAL TEAMS

AQUA BLUE SPORT
BARDIANI CSF
CAJA RURAL - SEGUROS RGA
CCC SPRANDI POLKOWICE
FORTUNEO - OSCARO
GAZPROM - RUSVELO
INFINITE AIS CYCLING TEAM
ISRAEL CYCLING ACADEMY
NIPPO - VINI FANTINI
WILIER TRIESTINA - SELLE ITALIA

CONTINENTAL TEAMS

AMORE & VITA - SELLE SMP - FONDRIEST
D'AMICO UTENSILNORD
HP BTP - AUBER93
HRINKOW ADVARICS CYCLEANG
LOKOSPHINX
MADISON GENESIS
MERIDIANA KAMEN TEAM
ROTH - AKROS
SANGEMINI - MG.K VIS
TEAM WIGGINS
UNIEURO TREVIGIANI - HEMUS 1896

WOMEN

ALE CIPOLLINI
ASTANA WOMEN'S TEAM
BEPINK COGEAS
CONCERIA ZABRI-FANINI-GUERCIOTTI
FDJ NOUVELLE AQUITAINE FUTUROSCOPE
GIUSFREDI BIANCHI
LOTTO SOUDAL LADIES
ORICA SCOTT
S.C. MICHELA FANINI
TEAM SUNWEB
TOP GIRLS FASSA BORTOLO

MTB

BIANCHI COUNTERVAIL
BERRIA FACTORY TEAM
BMC MOUNTAIN BIKE RACING TEAM
FOCUS XC TEAM

NATIONAL

CENTRE MONDIAL DU CYCLISME
CYCLING AUSTRALIA
BDR / RSK NAZIONALE TEDESCA
FEDERACAO PORTUGUESA DE CICLISMO
FEDERATION FRANCAISE DE CYCLISME
FEDERATION OF POLAND
FEDERAZIONE CICLISTICA ITALIANA FCI
GREAT BRITAIN CYCLING TEAM
REAL FEDERATION ESPANOLA DE CICLISMO
RUSSIAN CYCLING FEDERATION

CYCLO CROSS TEAM

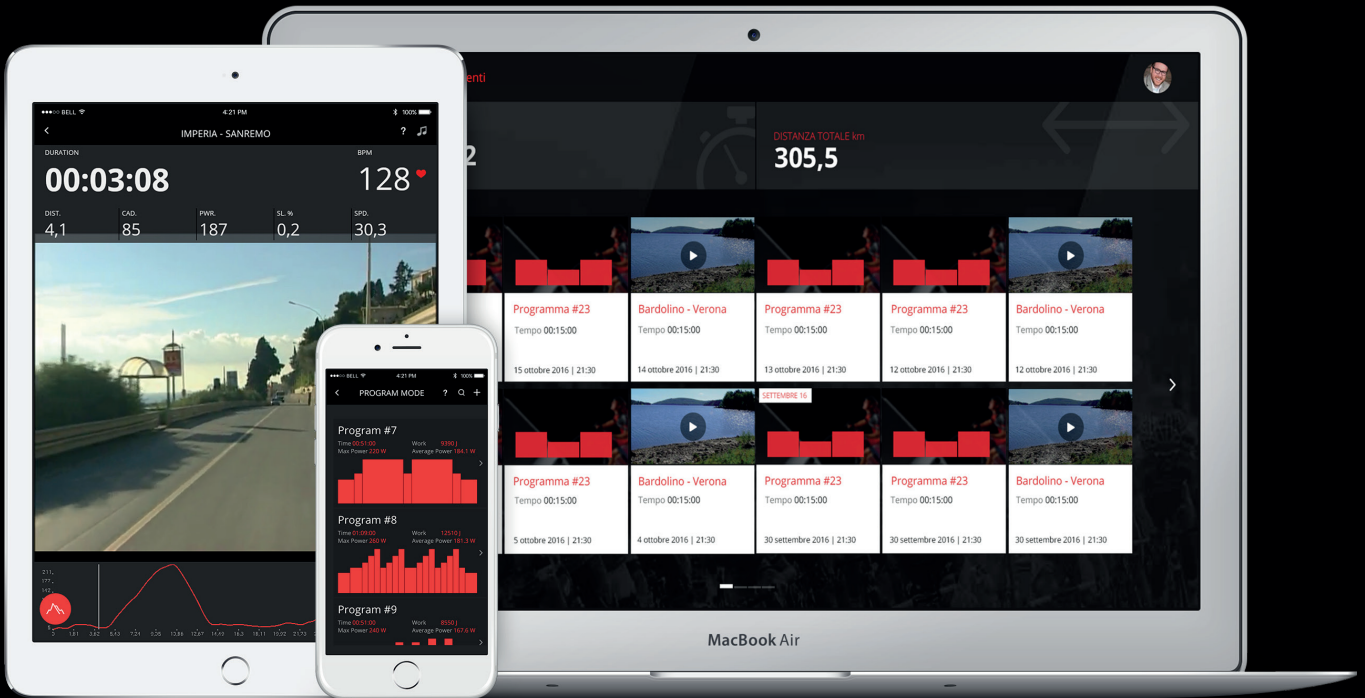
TEAM SELLE ITALIA - GUERCIOTTI - ELITE



List of teams sponsored until 31/12/2017. The list of teams that will sponsor in 2018 will be present on elite-it.com from 01/01/2018.

OFFICIAL SUPPLIER
OF WORLDTOUR TEAMS

SOFTWARE



MY E-TRAINING MOBILE & DESKTOP



The My E-Training software creates stimulating indoor training sessions via smartphones or tablets (both iOS and Android-based), as well as Mac and PC Windows that wirelessly connect to the hometrainer via ANT+™ or Bluetooth Smart protocols*.

The My E-Training manages and displays power, cadence, heart rate, speed, time and distance data.

MOBILE VERSION (iOS and ANDROID)
REALVIDEO : train with Elite RealVideos. Enjoy an indoor bike ride pretending to be on a real route. (available for sale inside the software)
MY REALVIDEO : more than 1000 myRealVideos for free, recorder by users from all over the world
TRAINING PROGRAMS : create training programs based on:
level mode
free training**
power - time
TRAINING TEST : undergo an evaluation test that helps you create month-long personalized indoor training
MAP COURSES : create races anytime and anywhere via Google Maps
IMPORT GPS DATA : easier data import from GPS cycle computers
TRAINING PROGRAM CREATION : the new graphic editor simplifies program creation
EXPORT DATA : export your training data to Strava, Training Peaks and MapMyRide
IN CLOUD DATA : save and store training data in the cloud to share with your other devices
RECORD GPS : record your GPS course and ride it indoors
OPTIONAL : ANT+ or Bluetooth heart rate belts are compatible to monitor your heart rate. Accessories are available on shopelite-it.com *

* the operative system and hardware should be compatible with ANT+™ or Bluetooth Low Energy

Download the app My E-Training:



DESKTOP VERSION (MAC OS and WINDOWS)
REALVIDEO : train with Elite RealVideos. Enjoy an indoor bike ride pretending to be on a real route. (available for sale inside the software)
MY REALVIDEO : more than 1000 myRealVideos for free, recorder by users from all over the world
TRAINING PROGRAMS : create training programs based on :
level mode
free training**
power - time
slope - distance
power - distance
elevation gain - distance
slope - time
TRAINING TEST : undergo an evaluation test that helps you create month-long personalized indoor training
MAP COURSES : create races anytime and anywhere via Google Maps
IMPORT GPS DATA : easier data import from GPS cycle computers
TRAINING PROGRAM CREATION : the new graphic editor simplifies program creation
EXPORT DATA : export your training data to Strava, Training Peaks and MapMyRide
IN CLOUD DATA : save and store training data in the cloud to share with your other devices
WEB RACE : compete with other Elite users in realtime on RealVideos
OPTIONAL : ANT+ or Bluetooth heart rate belts are compatible to monitor your heart rate. Accessories are available on shopelite-it.com *

** available for interactive trainers only

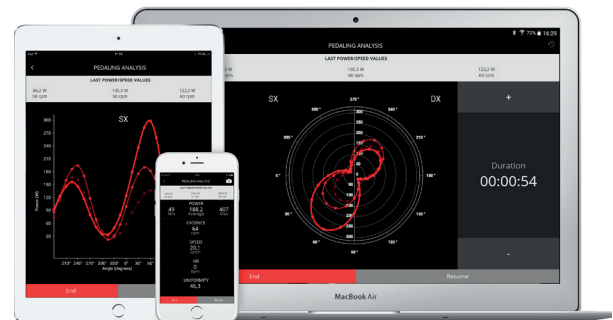
Download the software My E-Training: www.elite-it.com

PEDALING ANALYSIS

The Pedaling Analysis is a new and exclusive **DRIVO** feature developed by Elite to monitor the rider's power output throughout each pedal stroke. The rider can monitor the power output variations of each pedal stroke, and will better understand the coordinated action of extensors and flexors muscles, the smoothness of the pedaling and the mechanical efficiency of the movement itself. This translates into real improvement in the rider's performance, for both amateurs and pros alike, by a more efficient application of power throughout the pedal stroke.

Pedaling analysis is available on the My E-Training app

In-App purchases :



MY E-TRAINING MOBILE & DESKTOP



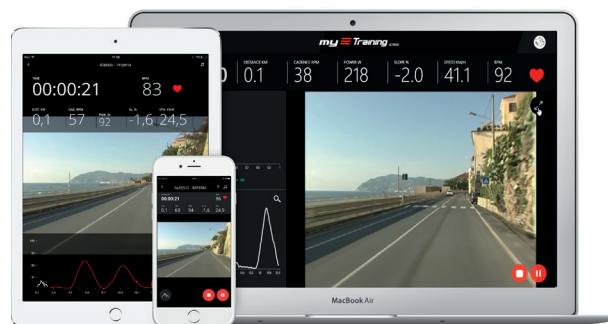
REALVIDEO

More than 70 RealVideos are available for Trainers and rollers.
For a complete list visit elite-it.com. For targeted and personalized training, RealVideos are available in three difficulty Levels:
Sport Training - Intense Training - Pro Training.



MY REAL VIDEO

More than 1000 myRealVideo for free, recorder by users from all over the world.



TRAINING PROGRAMS

It's possible to create truly complete training personal programs. Every cyclist can create training programs based on:

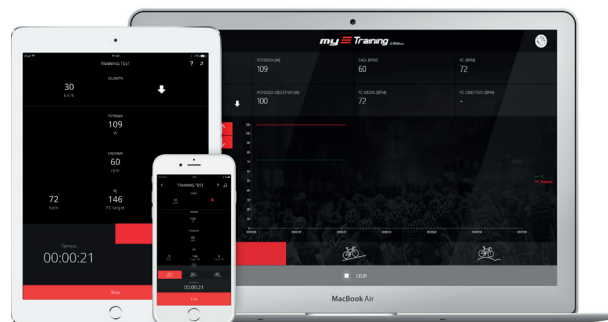
- level mode (*mobile and desktop version*)
- free training (*mobile and desktop version*)
- power - time (*mobile and desktop version*)
- slope - distance (*desktop version*)
- power - distance (*desktop version*)
- elevation gain - distance (*desktop version*)
- slope - time (*desktop version*)



TRAINING TEST

The Training Test is your virtual coach. In order to evaluate a cyclist's performance level, the software conducts an incremental test and creates a 4-week training plan based on the results.

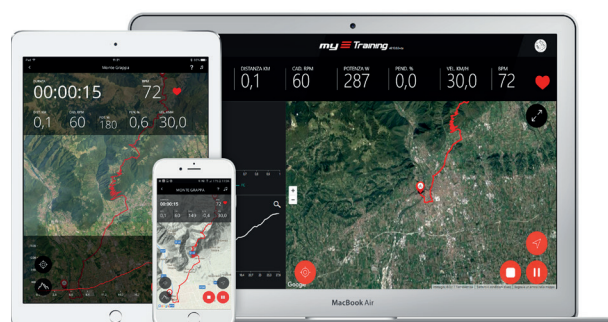
Each Training Test phase indicates the proper heart rate that the cyclist should maintain in order to get the most from a training session.



MAPS COURSES

Google Maps lets you create personalized courses from anywhere in the world and match the pedal resistance based on the altimetry to that you would experience on the real course. Maps can be displayed in many ways: Simple Map - Satellite view - Elevation mode - Perspective view.

Google Maps can be activated while riding and displays the on-screen course and rider's position. It is also possible to create new routes from your favourite rides and to check for updated course data.

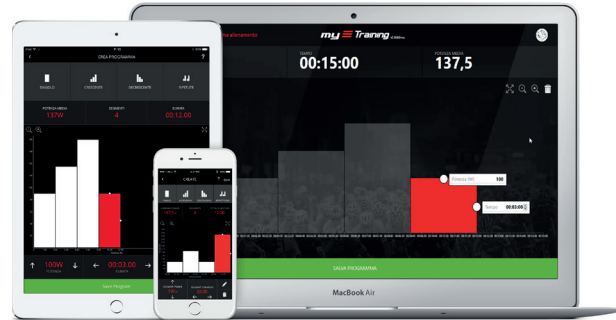


MY E-TRAINING MOBILE & DESKTOP



TRAINING PROGRAM CREATION

The new graphic editor simplifies program creation.



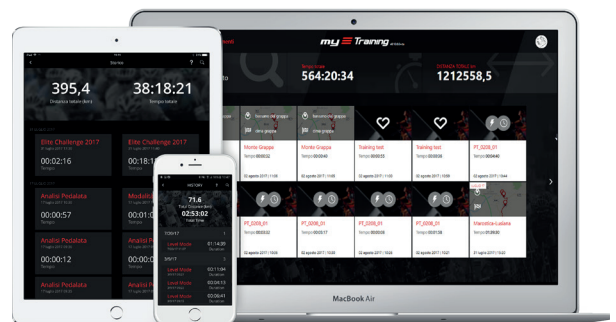
EXPORT DATA

Export your Training data to Strava, Training Peaks and MapMyRide.



IN CLOUD DATA

Save and store Training data in the cloud to share with your other devices



WEB RACE

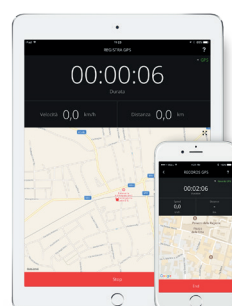
Compete with other Elite users in realtime on RealVideos.



RECORD GPS

Record your GPS course and ride it indoors.

**only for mobile version.*



MY REALVIDEO: FILM, RIDE AND SHARE YOUR OWN REALVIDEOS!

Elite's My RealVideo app lets the user record any course and ride it indoors on an Elite hometrainer (with the My E-Training software). More than 1000 MyRealVideos, recorded by users from all over the world, can also be downloaded for free.

Where will you ride today?
Choose between 1300 different free My RealVideo courses

New videos

1 2 3 4 5 ...

How does the My RealVideo work?

The diagram illustrates the following steps:

- Recording:** A user records a course on their smartphone while riding on a hometrainer.
- Syncing:** The recorded video is synced to a laptop.
- Riding:** The user rides the recorded course on their hometrainer, which is connected to a screen displaying the virtual course.
- Sharing:** The user shares their recorded video on social media or other platforms.

Download the app MyRealVideo

ELITE GRUPPO

Multi player software

Works with IPAD + Wasp

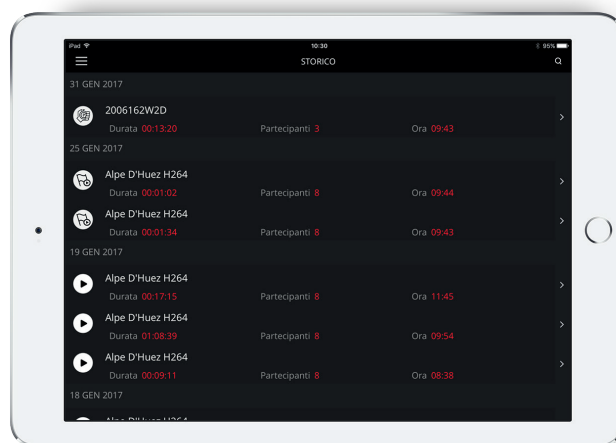
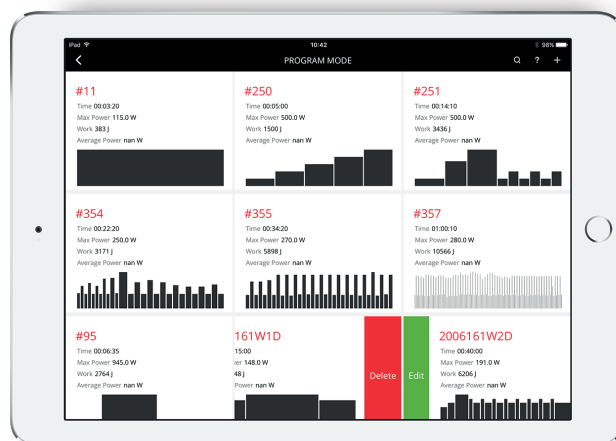
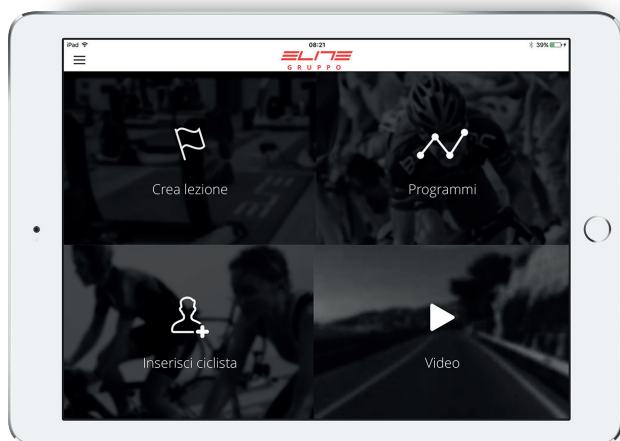
Annual subscription

Purchase in App Store

Compatible with all FE-C Interactive trainers

The app can:

- Manage multiple training groups
- Manage multiple training halls
- Manage the creation of classes
- Program training classes
- Manage the history of training classes
- Types of training sessions available:
 - Video competition
 - Power/Time programs
 - Video-based training sessions



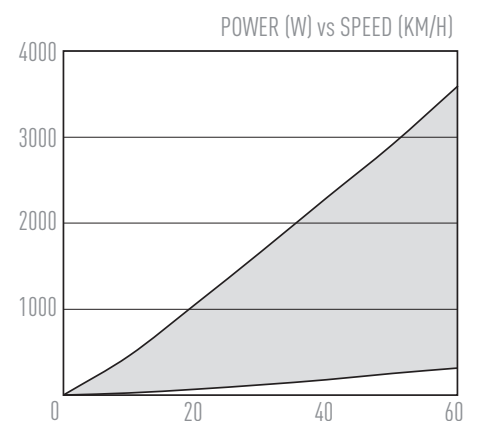
Download the app Elite Gruppo



INTERACTIVE TRAINERS



- _ Interactive direct transmission hometrainer with integrated power measurement system.
- _ Integrated OTS (Optical Torque Sensor) power meter.
- _ Measures power in Watt with $\pm 1\%$ accuracy.
- _ High power output: 2.300 Watt at 40 km/h.
- _ Electronically managed magnetic resistance, based on the type of training or course selected.
- _ Smooth pedalling.
- _ Very easy to use: foldable frame and integrated handle.
- _ Improves the rider's saddle position: the adjustable, anti-scratch plastic feet perfectly align the bike and duplicate the rider's road position on the trainer.
- _ Sprocket cassette not included.
- _ Compatible with Shimano 9/10/11 speed cassettes (not included).



WIRELESS PROTOCOL:



INCLUDED:



COMPATIBLE WITH:



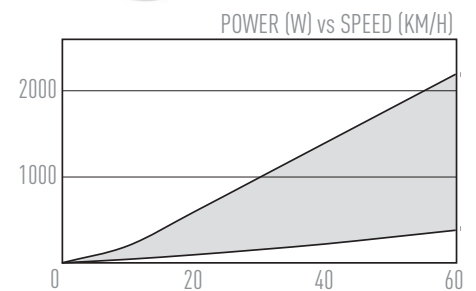
NOTE:



PLUS:



- _Interactive direct transmission hometrainer with integrated power measurement system.
- _Integrated OTS (Optical Torque Sensor) power meter.
- _Measures power in Watt with $\pm 2,5\%$ accuracy.
- _High power output: 1.400 Watt at 40 km/h.
- _Electronically managed magnetic resistance, based on the type of training or course selected.
- _Smooth pedalling.
- _Very easy to use: foldable frame and integrated handle.
- _Sprocket cassette not included.
- _Compatible with Shimano 9/10/11 speed cassettes (not included).



WIRELESS PROTOCOL:



INCLUDED:



12 months

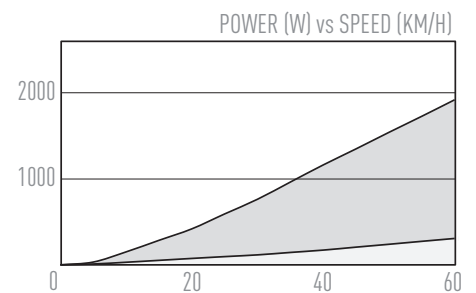
COMPATIBLE WITH:



NOTE:



- _ Smart Interactive Trainer.
- _ Interactive: Automatic resistance adjustment.
- _ Max slope: 10%.
- _ Wireless data transfer.
- _ 1-year subscription to My E-Training Software included.
- _ Compatible with third party apps and software, computers, tablets and cycle computers that feature ANT+™ FE-C and Bluetooth Smart protocols.
- _ Elastogel roller (Ø 40 mm).
- _ Very easy to use, intuitive set-up.
- _ Compatible with 24" to 29" wheels .
- _ "Automatic tension Plate": a system that maintains the correct pressure between the unit, roller and tire throughout training sessions.



WIRELESS PROTOCOL:



INCLUDED:



12 months

COMPATIBLE WITH:



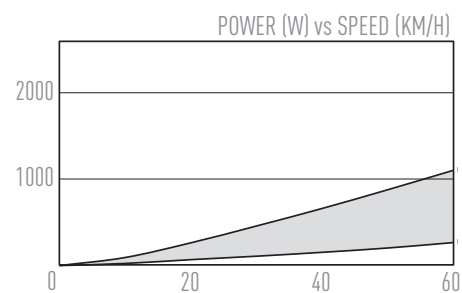
NOTE:



QUBO DIGITAL SMART B+ 0121028



- _ Smart Interactive Trainer.
- _ Interactive: Automatic resistance adjustment.
- _ Max slope: 6%.
- _ Wireless data transfer.
- _ 1-year subscription to My E-Training Software included.
- _ Compatible with third party apps and software, computers, tablets and cycle computers that feature ANT+™ FE-C and Bluetooth Smart protocols.
- _ Supplied with Qubo frame. Includes the compass Crono system that faithfully reproduces road-like conditions (weight/power).
- _ Extremely stable frame.
- _ Fast fixing locking system.
- _ Compatible with wheels from 20" to 29".



WIRELESS PROTOCOL:



INCLUDED:



12 months

COMPATIBLE WITH:



NOTE:



SMART TRAINERS



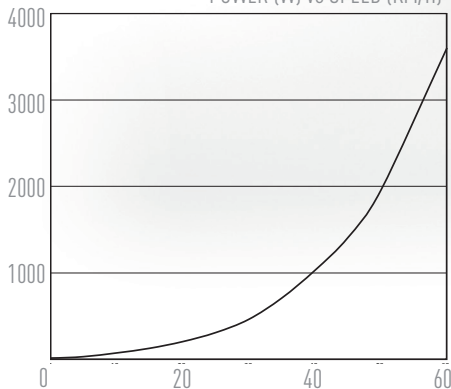
KURA 0164001



- _ Smart Power Meter Muin.
- _ Direct transmission hometrainer with fluid resistance and integrated OTS (Optical Torque Sensor) power meter.
- _ Measures power in Watt with $\pm 1\%$ accuracy.
- _ Progressive fluid resistance as a function of speed.
- _ High power output: 1020 Watt at 40 km/h.
- _ Wireless data transfer with ANT+™ and Bluetooth Smart protocols.
- _ Self-powered: automatically recharging battery.
- _ Lifetime subscription to the My E-Training Software included.
- _ Compatible with third party apps and software, computers, smartphones, tablets, cycle computers that feature ANT+™ Power, Ant+™ Speed&Cadence and Bluetooth Smart protocols.
- _ Perfectly smooth pedalling.
- _ Very easy to use and transport: foldable frame with integrated handle.
- _ Ideal for road and MTB bikes.
- _ Compatible with Shimano-SRAM 9/10/11 speed standard sprocket cassettes (not included).



POWER (W) vs SPEED (KM/H)



WIRELESS PROTOCOL:



INCLUDED:



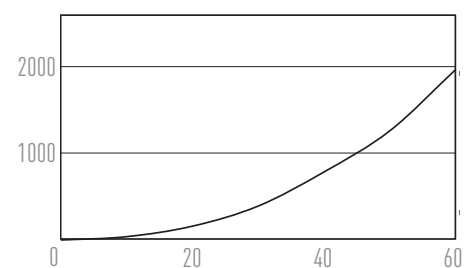
COMPATIBLE WITH:



- _ Smart Fluid Trainer.
- _ Direct transmission hometrainer with fluid resistance.
- _ Progressive fluid resistance as a function of speed.
- _ High power output: 780 Watt at 40 km/h.
- _ Wireless data transfer with ANT+™ and Bluetooth Smart protocols.
- _ Direct transmission hometrainer.
- _ Compatible with third party apps and software, computers, smartphones, tablets, cycle computers that feature ANT+™ Power, Ant+™ Speed&Cadence and Bluetooth Smart protocols.
- _ 12 months of free subscription to the My E-Training Software included.
- _ Perfectly smooth pedalling.
- _ Very easy to use and transport: foldable frame with integrated handle.
- _ Ideal for road and MTB bikes.
- _ Compatible with Shimano-SRAM 9/10/11 speed standard sprocket cassettes (not included).



POWER (W) vs SPEED (KM/H)



WIRELESS PROTOCOL:



INCLUDED:



12 months

COMPATIBLE WITH:



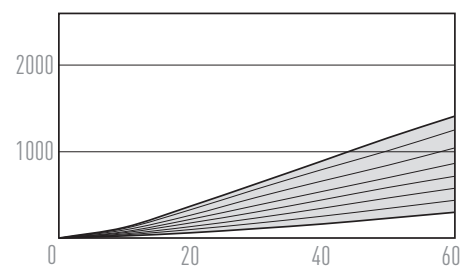
QUBO POWER MAG SMART B+ 0121026



- _ Smart magnetic hometrainer that transmits all the data needed for thorough training sessions with the **My E-Training Software**.
- _ Integrated ANT+™ and Bluetooth Smart speed/power/cadence sensor.
- _ Automatic resistance level data reading.
- _ 12 months of free **My E-Training Software**. "Level training" is free to use without limit.
- _ Speed/cadence/power data are shared with other compatible ANT+™ and Bluetooth Smart devices and apps.
- _ High output magnetic resistance unit with sequential 8-level selector.
- _ Qubo frame supplied with compass Crono system that faithfully reproduces road-like conditions (weight/power).
- _ Extremely stable frame.
- _ Compatible with wheels from 20" to 29".
- _ Fast fixing locking system.
- _ Elastogel roller.



POWER (W) vs SPEED (KM/H)



WIRELESS PROTOCOL:



INCLUDED:



12 months

COMPATIBLE WITH:



CLASSIC TRAINERS



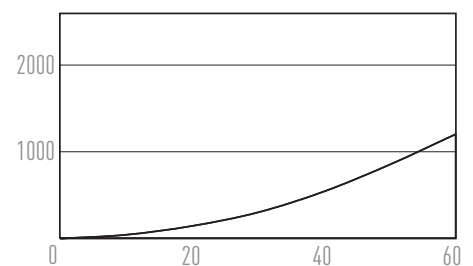
QUBO FLUID 0121006



- _ Resistance unit based on fluid technology plus Qubo frame.
- _ Trainers quiet, the most powerful and easiest trainer there is.
- _ 100% more powerful fluid resistance unit when compared to traditional fluid hometrainers.
- _ Compatible with Misuro B+.
- _ Compatible with the **My E-Training** Software (1-month free subscription, "Level _training" option is free without limit).
- _ Supplied with Qubo frame. Features the compass Crono system that faithfully reproduces road-like conditions (weight/power).
- _ Extremely stable frame.
- _ Compatible with wheels from 20" to 29".
- _ Fast fixing locking system.
- _ Elastogel roller with increased diameter (45 mm).



POWER (W) vs SPEED (KM/H)



INCLUDED:



1 month

COMPATIBLE WITH:



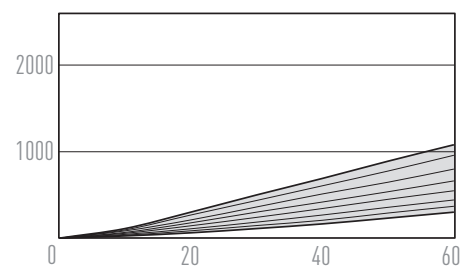
NOVO FORCE 0111303



- _Frame compatible with wheels from 24" to 29".
- _Fast fixing locking system.
- _8 magnetic resistance levels.
- _Elastogel roller.
- _Extremely stable and safe.
- _Compact for easy transport and storage.
- _Compatible with the My E-Training Software.
- _Compatible with the Misuro B+.



POWER (W) vs SPEED (KM/H)



COMPATIBLE WITH:



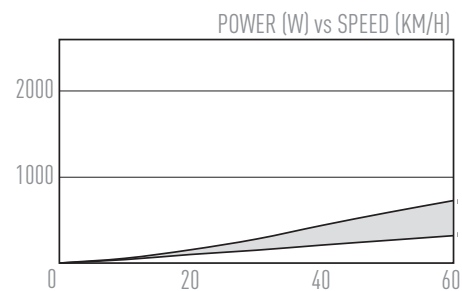
INTERACTIVE ROLLERS



ARION DIGITAL SMART B+ 0121102



- _ Electronically controlled integrated magnetic resistance unit.
- _ Max slope: 5%.
- _ Wireless data transfer.
- _ 1-year subscription to My E-Training Software included.
- _ Compatible with third party apps and software, computers, tablets and cycle computers that feature ANT+™ FE-C and Bluetooth Smart protocols.
- _ Parabolic-shaped rollers, so you ride freely and safely with perfect balance.
- _ Compatible with road bikes and MTB.
- _ Compact: frame folds up quickly for easy storage or transport.



WIRELESS PROTOCOL:



INCLUDED:



12 months

COMPATIBLE WITH:



NOTE:



ROLLERS



QUICK-MOTION 0162001



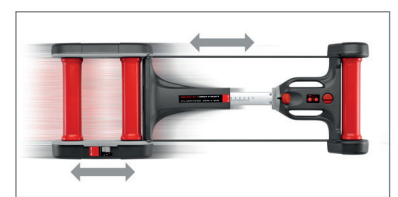
- _ Realistic Floating-system rollers aid balance during training.
- _ 3-level integrated magnetic resistance.
- _ Folds in 3 parts for reduced clutter.
- _ Integrated handle for easier transport.
- _ Parabolic rollers.
- _ Adjustable based on the bicycle's wheelbase.
- _ Compatible with the My E-Training Software (1-month free subscription, "Level training" option is free without limit).
- _ Compatible with Misuro B+.



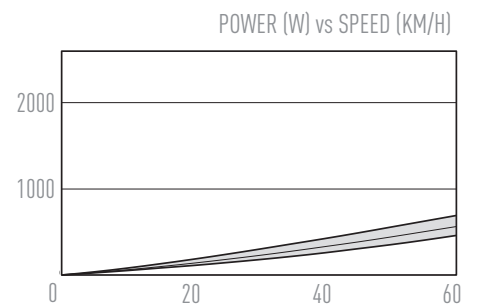
_Adjustable



_Foldable



_Floating system



INCLUDED:



1 month

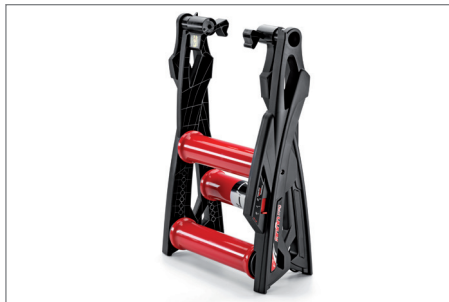
COMPATIBLE WITH:



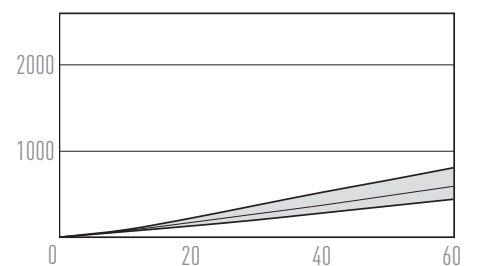
ARION MAG 0100550



- _Integrated magnetic resistance (3 levels).
- _Parabolic-shaped rollers, so you ride freely and safely with perfect balance.
- _Integrated frame step simplifies mounting and dismounting operations.
- _Light and foldable.
- _Compatible with the My E-Training Software (1-month free subscription, "Level training" option is free without limit).
- _Compatible with the Misuro B+.



POWER (W) vs SPEED (KM/H)



INCLUDED:



1 month

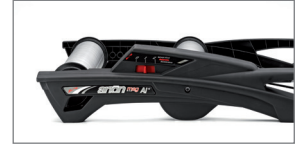
COMPATIBLE WITH:



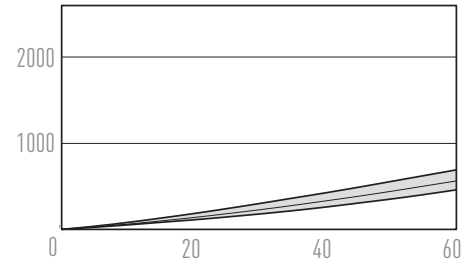
ARION AL13 0121201



- _ A very light yet strong frame.
- _ Integrated magnetic resistance (3 levels).
- _ Aluminum parabolic-shaped rollers, so you ride freely and safely with perfect balance.
- _ Integrated frame step simplifies mounting and dismounting operation.
- _ Folds with one easy movement.
- _ Compatible with the My E-Training Software (1-month free subscription, "Level training" option is free without limit).
- _ Compatible with the Misuro B+.



POWER (W) vs SPEED (KM/H)



INCLUDED:



1 month

COMPATIBLE WITH:



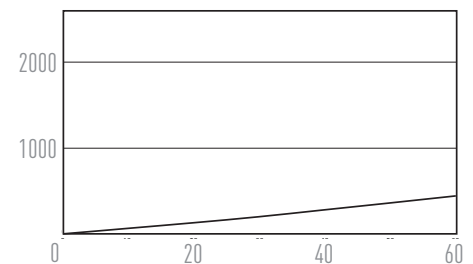
ARION 0100501



- _ A very light yet ultra-strong frame.
- _ Parabolic-shaped rollers, so you ride freely and safely with perfect balance.
- _ Built in step for easy rider mount and dismount.
- _ Arion folds with one easy movement.
- _ Compatible with the My E-Training Software (1-month free subscription, "Level training" option is free without limit).
- _ Compatible with the Misuro B+.



POWER (W) vs SPEED (KM/H)



INCLUDED:



1 month

COMPATIBLE WITH:



ACCESSORIES



VAISA 0160600



Bag for Drivo, Kura and Turno.



VAISETA 0061701



Bag for Novo, Qubo and Direto.



MISURO B+ 0145106



THE PERFECT SENSOR TO ENHANCE YOUR TRAINING SESSIONS WITH ELITE HOMETRAINERS AND ROLLERS.

_Bluetooth Smart and ANT+™ sensor sends speed, power and cadence data to compatible ANT+™ and Bluetooth Smart devices and apps. It must be installed directly on the hometrainer to manage indoor training via compatible smartphone, tablets, cycle computers and GPS devices.

_Compatible with Mac, PC Windows, all iOS and Android smartphones, tablets, cycle computers and GPS devices with ANT+™ or Bluetooth Smart Ready technology.

_Used with the My E-Training app, a regular hometrainer is converted into an advanced digital instrument that manages the most important training info and data.

WIRELESS PROTOCOL:



SENSOR AND ADAPTOR

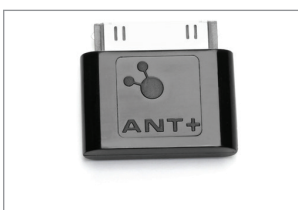


FREEHUB 1014233



Freehub compatible with Campagnolo 9/10/11 speed cassettes.
Compatible with: Drivo, Direto, Kura and Turno.

6099145



DONGLE ANT+™

1027002



ANT+™ HR TRANSMISSION BELT

1027006



BLUETOOTH SMART HR TRANSMISSION BELT

2027519



USB ANT+™ KEY



COPERTON 0102100



- _ Quietness and comfort.
- _ Heat dispersion: thanks to the special read pattern, the tire won't heat up like a road tire.
- _ Excellent grip between tire and trainer roller: the compound used offers a better grip compared to conventional tires.
- _ Increases trainer roller life.



SU-STA 0121901



- _ Front wheel support with height adjustment to simulate both flat terrain and slopes.
- _ Unique design with 5 levels lets you adjust the height of your front wheel to simulate hill climbs up to 6%.
- _ Anti-slip rubber feet.
- _ Internal design that guarantees maximum wheel stability.
- _ Suitable for both road and MTB.



TRAVEL BLOCK 0991710



- _ Helps you find the most comfortable position for training.
- _ Accessory for all home trainers.
- _ Raises the front wheel, give a better position for training.
- _ Adaptable for road bikes and MTBs.



GEL BLOCK 0991706



- _ For perfectly placed on the pedals.
- _ An indispensable accessory for a perfecting your position on the bike.
- _ Gives a more natural feel to your training.
- _ Maintains the horizontal position, just like riding on the road.
- _ The non-slip Elastogel insert ensures maximum stability for the front wheel.
- _ Absorbs vibration for greater comfort.



PROTECT PLUS

0130201



- _Protects the bicycle from sweat and avoids corrosions or rust.
- _Sits above the top-tube and can be adjusted for different bicycles.
- _Washing-machine friendly.



TRAINING MAT

0031009



- _Reduces hometrainer's vibrations and noise.
- _The finishing touch to your training area, it improves comfort and protects the training area.
- _Designed specifically for indoor Training.
- _Placed between the home trainer and the floor, it protects your home from oil, dirt and sweat.
- _Sound-deadening, it limits the noise produced by training, especially on wooden floors.
- _Dampens vibrations.
- _Easy to clean.



ADAPTOR THRU-AXLE FOR TRAINERS

1020008



- _Trainer adaptor kit for 10 mm and 12 mm diameter through bolts.
- _The adaptor kit makes Elite trainers compatible with bicycles with 10 mm to 12 mm diameter through bolts on the rear wheel.
- _Compatible with home trainers that require a fully assembled bicycle.



BOOST ADAPTOR

1014042



- _Adaptor for bicycles having rear Boost 148x12 mm thru axle.
- _Compatible with Drivo, Direto, Kura, Turno, Volano and Turbo roteeo.



POSA'

0143401



- _Tablet, notebook or smartphone steel work station.
- _Stable and Sturdy.
- _Adjustable anti-slip, scratch-free rubber platform.
- _Compact and easily portable.



BOTTLE CAGES



VICO CARBON



- _Injection bottle cage.
- _Painted carbon fibre with structure reinforced by composite material.
- _Extremely light.
- _Grips bottle firmly yet insertion / removal is very easy.
- _The choice of the best World Tour Pro Teams.



0156102



0156104



0156105



0156103



0156114



0156112



0156111



0156110



0156113



0156115



CUSTOM RACE PLUS



- _ Easy handling and improved bottle cage insertion/removal.
- _ Painted with Fibre-reinforced (FRP) construction.
- _ Adjustable elastomer rubber shim.
- _ The choice of the world's best Pro Teams.



0140603



0140618



0140617



0140602



0140601



0140606



0140630



0140607



0140609



0140610



0140611



0140614



0140613



0140615



0140616



0140612



ROCKO CARBON



INNOVATIVE DESIGN WITH SIDE AND FRONT BOTTLE INSERTION/REMOVAL

- _ Carbon injection bottle cage
- _ Extremely light, 21 grams
- _ Compatible with all frames, ideal for sloping tubes or small sizes



0174001



0174002



0174003



0174004



CANNIBAL XC



- _ Bottle cage in fibre-reinforced material (FRP) side entry.
- _ Simple and quick Insertion/removal of your bottle from front or sides.
- _ Compatible with all frames, ideal for sloping tubes or small sizes.



0175007



0175008



0175004



0175002



0175005



0175003



0175006



0175001



0175009



LEGGERO CARBON

0137001



- _ Resilient 100% carbon fiber bottle cage.
- _ Extremely light (15 g \pm 10%).
- _ Variable section design for resilience.



CUSTOM RACE



- _ Custom Race is the bottle cage most used by Pro Tour Teams.
- _ Painted fiber-reinforced (FRP) material.
- _ Elastomer joint expands and contracts according to the width of your bottle.
- _ Perfect for hard riding.



0061698



0061676



0061677



00616111



0061685



0061681



0061684



PARON RACE

ELITE

- _ Bottle cage in fibre-reinforced material (FRP).
- _ Paron adapts to all types of bottles thanks to it's flexible structure.



0101510



0101512



0101511



0101513



KIT CRONO CX



ELITE

- _ Aerodynamic bottle and bottle cage kit designed and tested in a wind tunnel.
- _ Bottle cage with monocoque carbon structure.
- _ Bottle with exclusive surface designed to maximize air penetration, and cap with membrane technology.
- _ Complies with UCI regulations.



0123003



0123001

Aerodynamically efficient bottle cage of fiber-reinforced (FRP) material.

Carbon monocoque bottle cage.



PRIA PAVE'

0101700



- _ Bottle cage in fiberglass-reinforced nylon.
- _ Thanks to the innovative adjustment system, the bottle cage adapts to all types of bottles 70 to 76 mm wide.
- _ Ideal for downhill or rough ground, thanks to the possibility of secure clamping of the bottle.



MOREO INOX



- _ Bottle cage with side and front bottle insertion/removal.
- _ Stainless steel construction.
- _ Light and strong.



0137101



0137102

CIUSSI INOX

0972505



- _ Tubular stainless steel bottle cage.
- _ Highly resistant, equipped with lateral anti-slip buttons for extra hold of the bottle.



CIUSSI



- The classic bottle cage that has won more than any other one.
- _ Made in aluminum alloy.
- _ Equipped with anti-slip buttons.



09225D25



09225D26

CIUSSI GEL



- Evolution of the world's most famous bottle cage.
- _ Aluminum bottle cage.
- _ Equipped with anti-vibration lateral buttons with gel inserts that hold the bottle tightly.



0000333



0000334

VIP

0123301



- _ Bottle cage support for fitting on frames that don't have specific fixing holes, or to increase the standard number of bottle cages.

- _ Compatible with tubes having diameter from 25 mm to 70 mm (from 1 to 2.8 inch).



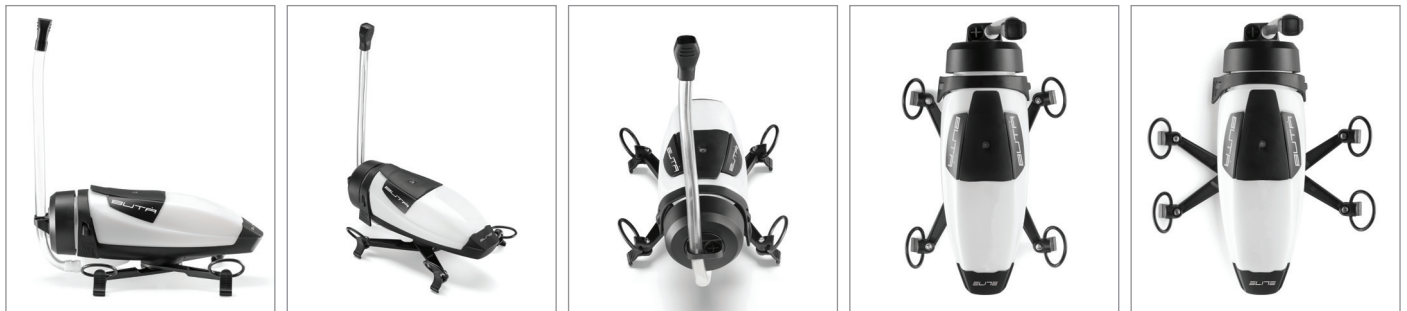
TRIATHLON GEAR



BUTA' 0161300



- _ Improves hydration by making it faster and simpler.
- _ Drink until the last drop with the all-new ergonomic liquid flow system.
- _ Refills quickly during races and liquid doesn't spill due to the anti-splash cap.
- _ The integrated elastic system creates a firm grip between bottle cage and bottle.
- _ Flexible straw that can be cut to desired length and soft silicone valve.
- _ Clamping system compatible with handlebars of 70 mm to 180 mm bar-end spacing.
- _ 100% BPA FREE polyethylene bottle.
- _ Capacity 750 ml.
- _ Composite bottle cage.

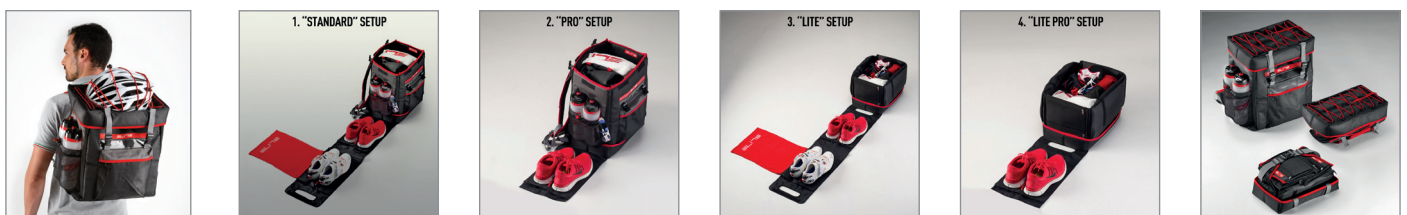


TRI BOX 0143101



The efficient and ergonomic Tri Box manages and organizes all your Triathlon equipment before, during and after a competition.

- _ Specifically designed for triathlon/duathlon competitions.
- _ 4 different setups based on rider's needs or transition area layout.
- _ Easily and comfortably transported.



SKEKANE

0111201 (WHITE) - 0111202 (BLACK)

ELITE

- _ Kit for fitting under the saddle, for carrying bottles and cycling accessories.
- _ Includes mounting bracket for 2 CO2 refills, 2 straps, stainless steel screws.
- _ Lightweight and durable in aluminum.
- _ Aerodynamic, adaptable and adjustable according to needs.
- _ Compatible with all normal standard metal and carbon saddle rails.



TIRACHE

0159001

ELITE

- _ Improves the visibility of the triathlete's race number.
- _ Reduces number flapping during cycling and improves aerodynamic efficiency.
- _ Adjustable number position.
- _ Easy and quick set-up.



RACKER

0143001

REGISTERED
DESIGN

ELITE

Racker Race Bike Storage: specific triathlon/duathlon stand that safely supports your bicycle in the transition area in between the sporting disciplines.

- _ Specifically designed for competition.
- _ Speeds up transition times.
- _ Compatible with most current saddles, including triathlon designs.
- _ Easy to use, does not require tools.



BIKE NUMBER HOLDER

0143201

REGISTERED
DESIGN

ELITE

- _ Features a nametag display for your bike.
- _ Specifically designed to be used in competition.
- _ Does not need tools for setup.





timeless glory



VINTAGE BOTTLES



- _ Bottle inspired by past cycling champions.
- _ Vintage design and colours.
- _ Food-grade certified plastic materials.



0160308



0160307



0160309



0160300



0160301



0160304



0160302



0160303

BOTTLE CAGES EROICA

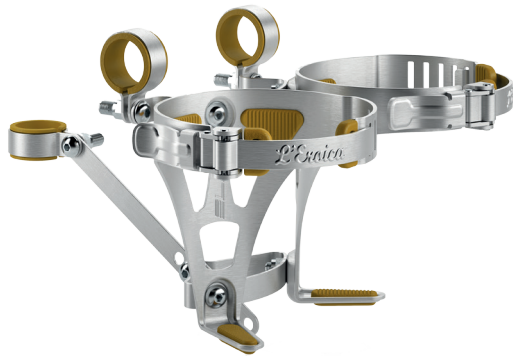


L'Eroica®

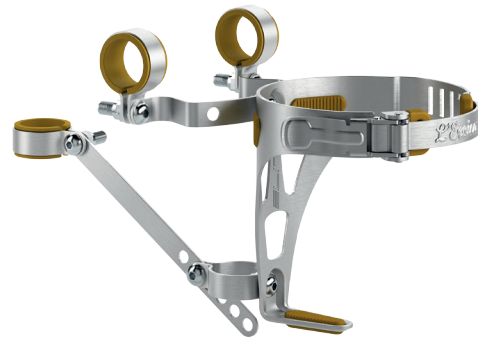
timeless glory

- _Choice of materials and designs inspired by the bottle cages of the legendary cycling champions.
- _The bottle cage attaches retro-style to the bicycle's handlebar.
- _Opaque satin-finish.
- _Adjusts to the bottle's diameter.
- _The lever-closing system holds the bottle securely even over rough terrain.
- _Available in a single (1 bottle) or a double (2 bottle) version.

0156001



0156002



BOTTLE EROICA 0150201



L'Eroica®

timeless glory

- _Choice of materials and designs inspired by the bottles of the legendary cycling champions.
- _Satin-finished aluminium bottle body and cork cap.
- _Capacity 600 ml.
- _Diameter 74 mm.



BOTTLES



TEAMS



FLY TEAM 550ML

- _The lightest sport bottle available worldwide odorless, soft and durable plastic material, the result of an experimental research project realized by Elite.
- _Used from the best World Tour pro teams in 2017.
- _With ergonomic cap and it's multi-material made. It guarantees an increased and easier liquid flow.
- _Diameter 74 mm.



0160401



0160400



0160403



0160408



0160407



0160406



0160402



0160405



0160410



0160414



SUPER CORSA TEAM 750ML

- _Soft and squeezable for an easier liquid flow during cycling.
- _Available with the official graphics of professional cycling teams.
- _Biodegradable.



0091759



0091793



00917106



0150516



0150133

CERVELO - OMBRA 550 & 750

- _High flow membrane valve technology.
- _Food-grade squeezable polyethylene.
- _Diameter 74 mm.

- _The lightest sport bottle available worldwide.
- _Odorless, soft and durable plastic material, the result of an experimental research project realized by Elite.
- _New colours.
- _With ergonomic cap and it's multi-material made. It guarantees an increased and easier liquid flow.
- _Diameter 74 mm.

FLY 550ml



0160446



0160447



0160448



0160449



0160450



0160442



0160441



0160443



0160444



0160445

FLY 750ml



0160703



0160701



0160702



0160704



CRYSTAL OMBRA



- _KK Resin material, transparent to monitor liquid level.
- _New design improves bottlecage's grip on the bottle.
- _New cap with soft, odourless push-pull valve for easier opening and closing during cycling.
- _Membrane valve technology.
- _High liquid flow.
- _Squeezable.
- _Capacity: 550 and 750 ml.

CRYSTAL OMBRA 550 ML



0150121



0150123



0150122



0150124



0150125

CRYSTAL OMBRA 750 ML



0150510



0150511



0150513



0150512



OMBRA



OMBRA 550 ML

- _ In 3 sizes, to always have necessary drinks with you.
- _ Food-grade squeezable polyethylene.
- _ Membrane valve technology.
- _ Capacity: 550, 750 and 950 ml.



0150113



0150112



0150114



0150115



0150116



0150117



0150118

OMBRA 750 ML



0150506



0150508

OMBRA 950 ML



0150601



CORSA

biodegradable BPA Free



CORSA 550ML



00914166



00914168



00914165

SUPER CORSA 750ML



0091754



0091753



0102204

MAXI CORSA 950ML



CORSA MTB

biodegradable BPA Free



_With protective cover.

CORSA MTB 550ML



0101807

SUPER CORSA MTB 750ML



0101906

MAXI CORSA MTB 950ML



0102006

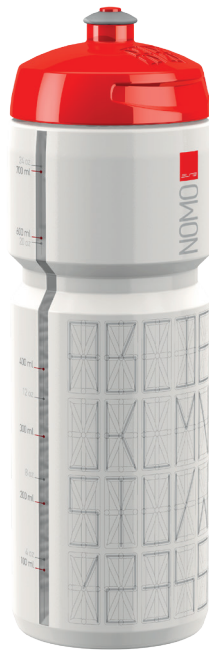


NOMO 0173002



CUSTOMIZE YOUR BOTTLE

- _ Can be personalized, writing both name and number of the athlete by using a special grid.
- _ Sporty design.
- _ Food-grade squeezable polyethylene.
- _ Registered Design.
- _ Patent Pending.
- _ Diameter 74mm.
- _ BPA free.
- _ Capacity 750 ml.



CANDEA 0140101



- _ LED bottle for increased visibility.
- _ Highly efficient MicroLED with low energy consumption.
- _ Highly visible for increased rider safety.
- _ 3 different modes: high visibility, energy saving and blink.
- _ Squeezable.
- _ Capacity: 650 ml.



SHAKER 0150401



- _ Ideal for mixing powdered supplements.
- _ Capacity: 700 ml.



- _ Bottle Cage Tool Bag.
- _ Perfect on the move storage.
- _ Fits most standard bottle cages.
- _ Internal pocket and detachable organizer keeps gear neatly in place.
- _ Durable and waterproof.
- _ Zip closure.



0177001



0177002



BYASI

- _ Tool holder bottle.
- _ Standard diameter (Ø 74 mm).
- _ Capacity 750 cm³ - 850cm³.

BYASI



0111803

SUPER BYASI



0111804



0122902



NANOGE LITE



The constant research for innovative materials has led to the creation of the Nanogelite. Nanogel[®] is the world's lightest and best solid insulating material. Its structure with nanopores is a real trap for gas molecules and offers a drastic reduction in heat transmission. In fact, the lightness and elasticity of Nanogel[®] (composed of 5% solid part and 95% air) have enabled the creation of a compact and flexible thermal flask guaranteeing matchless thermal performance.

- _ Lightweight, squeezable bottle with unsurpassed thermal performance up to 4 hours with cold liquids.
- _ Triple-function cap with soft rubber push-pull nozzle is easy on the mouth and delivers fluid fast.
- _ Easy to grip bottle with ergonomic shape.
- _ 500 ml or 650 ml liquid capacity.

NANOGE LITE 500ML



0141106



0141107



0141108



0141109

NANOGE LITE 650ML



0141202



- _ Squeezable thermal bottle: up to 2 hours insulating performance.
- _ Double isothermal wall structure.
- _ Polyethylene squeeze body.
- _ Easy to grip bottle with ergonomic shape.
- _ Soft rubber push-pull nozzle and protection cover.

ICEBERG 500ML



0080347



0080350



0080348



0080351



0080346



0080353



0080349

ICEBERG 650ML



0090633



0090632



TURACIO



- _3-hour thermal bottle.
- _Double-walled structure with 100% natural cork insulating panel.
- _Squeezable polyethylene bottle body and sports design.
- _Lock/Unlock membrane valve, easier liquid flow.
- _Capacity: 500 ml.



0141306



0141307



0141304



0141305



SYSSA



- _Aluminium bottle of pure linear design.
- _Shockproof protective cap.
- _Ergonomic ring for better grip.
- _Capacity: 750 ml.



0101211



0101212



DEBOYO

0160102



- The first competition thermal drinks container with vacuum insulation. Entirely in AISI 304 stainless steel with hygienic profile inside walls and outside with profile suitable for fixing on the bottle cage for racing and outdoor use.
- Keeps beverages cold or hot for up to 12 hours.
- _Soft rubber push pull nozzle and protection cover.
- _Diameter: standard (Ø 74 mm).
- _Leisure cap included.
- _Capacity: 500 ml.

INCLUDED: Leisure cap.



VERO GT

- _ Tritan bottle preserves your drink's original taste.
- _ Clear glass-like transparency.
- _ Capacity: 700 ml.



0141613



0141612



0141611



0141614



VERO GT THERMAL

- _ Double-walled Tritan thermal bottle.
- _ Maintains liquid temperature for prolonged periods.
- _ Glass-like transparency.
- _ Capacity: 500 ml.



0141705



0141704



TRINKA



- _ Tritan bottle preserves drink's original flavour.
- _ Clear glass-like transparency.
- _ Screw cap for easy drink.
- _ Capacity 700 ml.



0161007



0161006



0161008



BOCIA



- _ Bottle designed for younger riders.
- _ Smaller 66mm diameter, easier to handle.
- _ Tritan bottle preserves drink's original flavour.
- _ Capacity: 350 ml.



0140204



0140201



0140203



0140205



0140202

KIT CEO



- _ CEO bottle cage + Corsetta bottle kit.
- _ Ideal for younger riders.
- _ Very easy to use .
- _ Smaller 66 mm diameter.



0146002



0146001



0146004



CORSETTA



- _ Bottle designed for younger riders.
- _ Aggressive profile.
- _ Smaller 66mm diameter.
- _ Capacity: 350 ml.



0140302



0140301



0140603



NEW GENERATION ELITE

TRINKA COCA-COLA 0161100



- _ Tritan bottle preserves drink's original flavour.
- _ Clear glass-like transparency.
- _ Screw cap for easy drink.
- _ Capacity 700 ml.

Coca-Cola®

Elite is official Coca-Cola licensee



Maximum Capacity 700 ml. For cold non-alcoholic beverages only.
Water before each use. ATTENTION! This product is not a toy.
© The Coca-Cola Company. All rights reserved.

OMBRA COCA-COLA



- _ In 3 sizes, to always have necessary drinks with you.
- _ Food-grade squeezable polyethylene.
- _ High flow membrane valve.
- _ Capacity: 550, 750 and 950 ml.



0150126



0150127



0150514



0150515



0150603



0150604

SLAT WALL DISPLAY

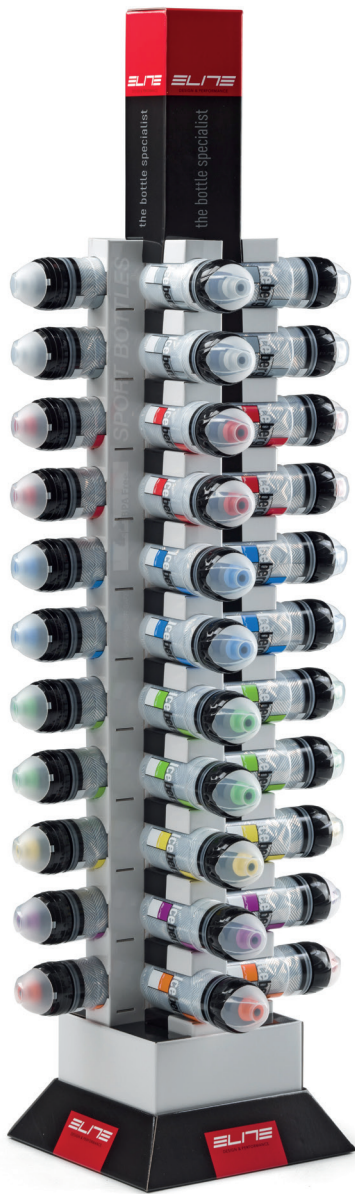
Slat wall display for Vico and Fly.



FLOOR TOWER DISPLAY



- _ Compact, handy and effective.
- _ Contains up to 44 bottles.
- _ The column design enhances bottle and design detail visibility.
- _ Dimensions: 36 mm x 36 mm x 164 mm.



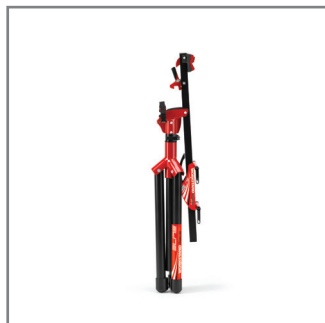
MAINTENANCE



WORKSTAND RACE PRO 0060311



- _Extremely light, made from aluminum.
- _All the components are rustproof and very strong.
- _Folds quickly and compactly for easy transport to events.
- _Bike support snaps securely into position and then folds easily, by simply pressing a trigger.
- _Used by Pro Tour teams.



ADAPTOR THRU-AXLE

∅ 15 MM



1020005

∅ 20 MM



1020006

- _Compatible with all types of bicycles.
- _Very stable.
- _Supplied with scratch-free, 360° rotatable locking clamp.
- _Height adjustable.
- _Easy to use.



TRS 081001

ELITE

- _ Professional repair stand.
- _ Steel base for more stability.
- _ Zinc plated tube enables height adjustment of the clamp (maximum height 150 cm).
- _ Tray that holds tools and parts.



BRACCIO PINZA 081001

ELITE

- _ Solid aluminum die-casted quick release.
- _ Clamp holds firmly frames from \varnothing 18 to \varnothing 45 mm.
- _ Clamps spins 360°, comes with replaceable soft rubber coverings to protect the bicycle.



WORKSTAND TEAM 0091501

ELITE

- _ Easy to use and to fold.
- _ Height adjustable.
- _ Clamp rotates 360 degrees.



WORKSTAND TRAY

ELITE

- _ Practical and sturdy plastic tray with numerous compartments.
- _ Manages all your maintenance tools in a neat and ergonomic way.

\varnothing 40 MM



1042651

Compatible with Workstand Race.

\varnothing 45 MM



1042557

Compatible with Workstand Team, TRS and Tiensù.

BICYCLE TRANSPORT



- _Practicality and design for safe transport of a complete bike on the car roof.
- _Self-adjusting clamp with an innovative automatic closing system, makes it easy to load and unload the bike quickly and with no risk of damaging the bike or the car.
- _Safe and practical safety lock with antitheft key.
- _Compatible with all frame types and wheel sizes, thanks to the wheel supporting system that slides along the aluminum bars.
- _Compatible with wheels up to 29”.



RONDA 0121452



- _ Safe, practical and strong bike-carrier.
- _ Frame clamp with a rapid locking mechanism, and safety lock with antitheft key.
- _ Compatible with all frame types and wheel sizes, thanks to the adjustable wheel straps.
- _ Compatible with wheels up to 29".



SANREMO RACE LOCK 0121401



- _ Bike rack with double safety lock with key anti-theft.
- _ Compatible with most forks for racing bicycles (including carbon) and MTB's (even with disc brakes).
- _ Practical and secure bicycle fastening system, adjustable according to needs.
- _ Compatible with most roof racks (up to 80 x 50 mm).
- _ Ample adjustment of distance between front and rear wheel (up to 610 mm).
- _ Compatible with wheels up to 29".



- _ Sanremo bicycle carrier compatible with all types of bicycles (even with disc brakes) and car bars (up to 80 x 50 mm).
- _ Compatible with wheels of any size, thanks to the new rear wheel support oscillating system.
- _ Ample adjustment of distance between front and rear wheel (up to 520 mm).
- _ Super strong aluminum body with quick clamping system.
- _ Preassembled, easy to use, compact for durability
- _ Compatible with wheels up to 29".



ADAPTOR THRU-AXLE

ADAPTOR THRU-AXLE (SANREMO TOUR AND RACE LOCK)

∅ 15 MM
1072014



∅ 20 MM
1072015



PORTARUOTA 80

- _ Front wheel carrier.
- _ Compatible with any type of bars up to 80 mm cross-section.



093003

ADAPTOR THRU-AXLE (SANREMO)



∅ 15 MM
1020005



∅ 20 MM
1020006

- _Extra-strong rigid case, with double wall in high-density polyethylene.
- _Compatible with road and mountain bikes, with suspension and disc brakes having frame sizes up to 62 cm.
- _Fitting the bicycle in the case is very easy thanks to the hinges which allow 180° opening of the two shells similar to that of the bicycle cases.
- _The four re-entering fasteners with incorporated lock prevent any components inside from being stolen during transport.
- _The two handles placed on the sides of the case enable lifting and easy carrying by sliding on the bottom wheels.



- _Totally safe.
- _Very little bicycle disassembly required.
- _Total compatibility.
- _Compatible with bicycles with quick-release and thru-axle
- _Super light.
- _Easy handling.
- _Reduced clutter.
- _Developed and tested with pro tour teams.



ELITE STORAGE



- _Arca Wall-Mounted Bike Rack.
- _Stylish stainless steel wall-mounted bike rack.
- _Safely stores 1 bike of any type, shape or size.
- _Anti-scratch soft rubber insert and leather-style cover.
- _Features 1 multi-purpose hook that can be used for many different items.
- _Very easy to set up.
- _Integrates and enhances the home setup of any lover of cycling.



- _The safe and trouble-free storage solution for your bicycle.
- _Perfect for all types of bicycles: Road, MTB, City, e-bike.
- _Automatic "scratch-free" system for quick and easy bicycle hanging and removal.
- _Includes a rear wheel support to prevent the tyre from contacting with the wall.





The Ozone Elite products are the result of scientific research on ozone. Their use combines the benefits of massage with those deriving from their active ingredients, including Ozonides. Obtained from the interaction of ozone with vegetable oils, these molecules are able to supply the tissue with a readily assimilated oxygen concentrate.



DISPLAY OZONE ELITE 14 PCS 0040148

WARM UP OIL 0040141

before

Prepares the muscle to physical activity by increasing blood circulation, and oxygenizes the muscle thanks to the presence of Ozonides. Applied directly to the skin until it's absorbed, it produces a feeling of warmth without associated burning sensations.



DEPIL MOUSSE 0040146

before

Hair removal spray cream is easy to apply and fast acting. A special mix of ingredients moisturize, refresh and soothe the skin. Apply directly to the part to be treated, no spreading necessary.





ENDURANCE PROTECT CREAM 0040144

before
after

An emulsion containing zinc oxide relieves skin redness and promotes transpiration. An active menthol and peppermint essential oil formulation creates a clean, fresh and pleasant sensation. Calendula oil and alpha-bisabolol exert a calming and soothing action. Arnica extract is a natural anti-inflammatory agent that eases muscle pain. Ozonized sunflower oil promotes tissue oxygenation.



WATERPROOF WARM UP EMULSION 0040142

after

Emulsion withstands wet and cold conditions for sustained heating performance and protection from injury. It is also the only warm-up emulsion with the added benefit of Elite's unique ozonized formulation that oxygenates the muscles as you ride.



PROTECT CREAM CHAMOIS 0040135

before
after

The Ozonides that have an anti-bacterial effect contribute to the process of recovering of the skin and avoid the creation of painful substances. Ideal also for precautionary use, it is useful after sport activity to soothe reddening, chaffing and stiffness.



TONE CREAM 0040139

after

In this product the Ozonides have an oxygenating effect and stimulate blood circulation, helping recovery after the exercise. The product is rich in essential oil and if it's used in a prolonged massage, helps and encourages decontraction and drainage of muscles.



ENERGY OIL 0040138

before

Particularly rich in Ozonides and essential oils, it offers a surplus of oxygen, increasing the oxygenation of tissues. A metabolic amplifier that helps reducing lactic acid buildup by favoring its conversion into sugars and thus supplying new energy to the body.



INTENSE WARM UP GEL 0040137

before

Combines the properties of Ozonides with a more intense thermal effect, ideal in particularly cold weather and unfavorable winter riding conditions such as rain, wind and fog.



ENERGEL SHOWER 0040147

after

In just one product you will find a body cleanser, a revitalizing shampoo and a refreshing body wash with beneficial properties activated and enhanced by the presence of Ozonides.



ELITE

DESIGN & PERFORMANCE



facebook.com/elitebiketraining



instagram.com/elite_cycling



twitter.com/elite_cycling



youtube.com/elitebiketraining

ELITE S.R.L.

VIA FORNACI, 4
35014 FONTANIVA
PADOVA - ITALY



elite-it.com